



Date: 05/03/12

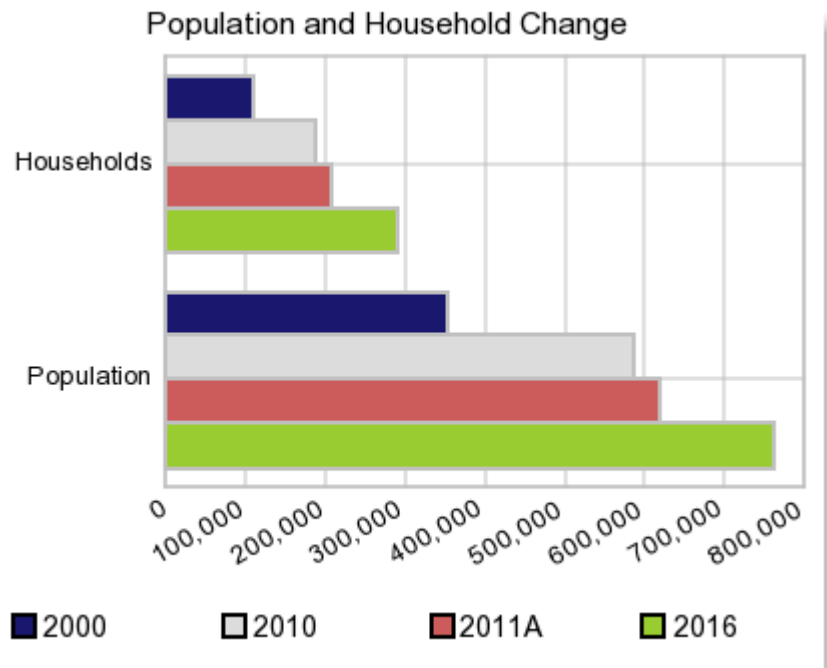
Current Geography Selection: (1 Selected) Counties: Fort Bend County

## Executive Summary Report with Charts

### Population Demographics:

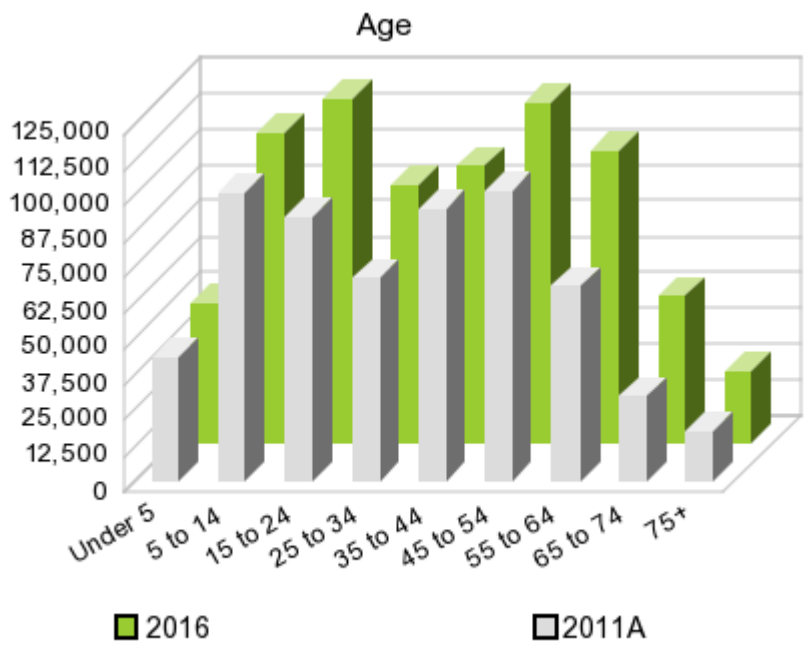
The number of households in the study area in 2000 was **110,915** and changed to **187,384** in 2010, representing a change of **68.9%**. The household count in 2011A was **207,929** and the household projection for 2016 is **289,872**, a change of **39.4%**.

The population in the study area in 2000 was **354,452** and in 2010 it was **585,375**, roughly a **65.2%** change. The population in 2011A was **620,486** and the projection for 2016 is **760,924** representing a change of **22.6%**.



	2000 Census	2010 Census	2011A Estimate	2016 Projection	Percent Change	
					2000 to 2010	2011 to 2016
Total Population	354,452	585,375	620,486	760,924	65.2%	22.6%
Total Households	110,915	187,384	207,929	289,872	166.1%	39.4%

### Population by Age



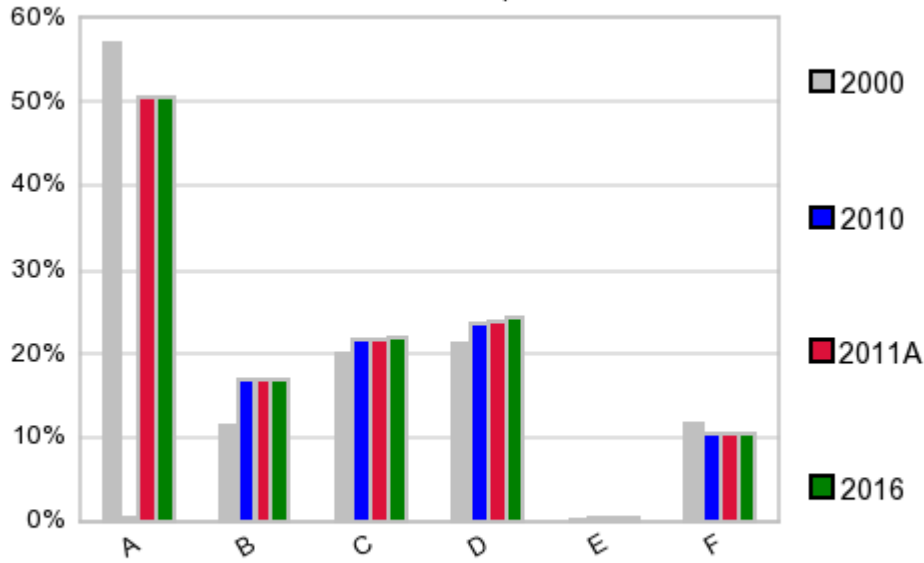
In 1990, the median age of the total population in the study area was **31**, and in 2000, it was **33**. The median age in 2011A is **35** and it is predicted to change in five years to **37** years. In 2011A, females represented **50.1%** of the population with a median age of **36** and males represented **49.9%** of the population with a median age of **34** years. In 2011A, the most prominent age group in this geography is **Age 45 to 54** years. The age group least represented in this geography is **75 +** years.

**Age Groups\***

	1990		2000		2011A		2016		Percent Change	
	Census	%	Census	%	Estimate	%	Projection	%	1990 to 2000	2011 to 2016
0 to 4	21,300	9.5%	27,337	7.7%	43,246	7.0%	48,518	6.4%	28.3%	12.2%
5 to 14	42,335	18.8%	66,040	18.6%	100,727	16.2%	108,316	14.2%	56.0%	7.5%
15 to 19	17,481	7.8%	29,661	8.4%	50,459	8.1%	61,036	8.0%	69.7%	21.0%
20 to 24	11,986	5.3%	17,507	4.9%	42,142	6.8%	59,297	7.8%	46.1%	40.7%
25 to 34	42,242	18.7%	45,895	12.9%	71,256	11.5%	89,915	11.8%	8.6%	26.2%
35 to 44	45,233	20.1%	68,441	19.3%	95,593	15.4%	96,318	12.7%	51.3%	0.8%
45 to 54	21,756	9.7%	55,359	15.6%	101,424	16.3%	119,093	15.7%	154.5%	17.4%
55 to 64	11,961	5.3%	24,043	6.8%	68,563	11.1%	102,031	13.4%	101.0%	48.8%
65 to 74	6,963	3.1%	12,222	3.4%	29,507	4.8%	51,338	6.7%	75.5%	74.0%
75 +	4,157	1.8%	7,947	2.2%	17,562	2.8%	25,017	3.3%	91.2%	42.5%

**Population by Race/Ethnicity**

### Race and Ethnicity Percent Composition



In 2011A, the predominant race/ethnicity category in this study area is **White**. The race & ethnicity category least represented in this geography is **American Indian, Alaska Native**.

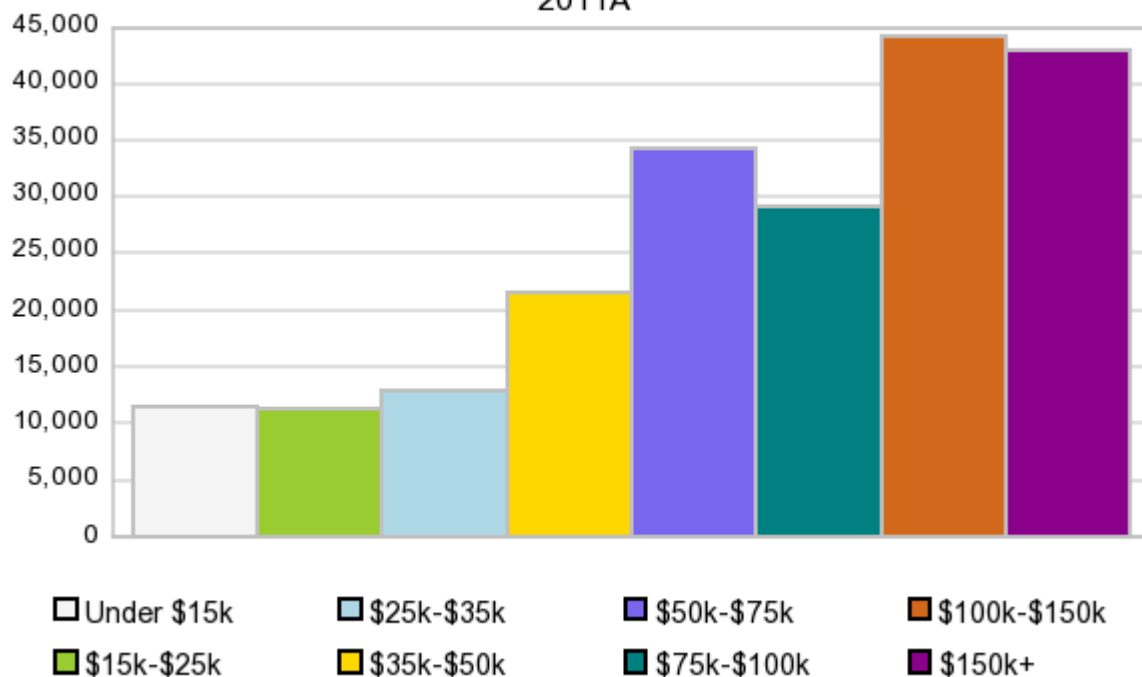
A: White  
 B: Asian Pac Islr  
 C: Black  
 D: Hispanic  
 E: Amer Indian or Alaska Native  
 F: Other or Multi Race

Race & Ethnicity	2000		2010		2011A		2016		Percent Change	
	Census	%	Census	%	Estimate	%	Projection	%	2000 to 2010	2011 to 2016
White	201,896	57.0%	296,310	50.6%	313,907	50.6%	384,168	50.5%	46.8%	22.4%
Black	70,356	19.9%	125,818	21.5%	133,757	21.6%	165,773	21.8%	78.8%	23.9%
American Indian or Alaska Native	1,046	0.3%	2,302	0.4%	2,439	0.4%	3,004	0.4%	120.1%	23.2%
Asian/Hawaiian/PI	39,836	11.2%	99,596	17.0%	105,273	17.0%	127,800	16.8%	150.0%	21.4%
Some Other Race	32,240	9.1%	44,328	7.6%	48,829	7.9%	59,977	7.9%	37.5%	22.8%
Two or More Races	9,078	2.6%	17,021	2.9%	16,276	2.6%	20,200	2.7%	87.5%	24.1%
Hispanic Ethnicity	74,871	21.1%	138,967	23.7%	148,204	23.9%	185,163	24.3%	85.6%	24.9%
Not Hispanic or Latino	279,581	78.9%	446,408	76.3%	472,280	76.1%	575,748	75.7%	59.7%	21.9%

### Households by Income

## Households by Income Group 2011A

In 2011A the predominant household income category in this study area is **\$100K - \$150K**, and the income group that is least represented in this geography is **\$15K - \$25K**.



### HH Income Categories\*

	1990 Census		2000 Census		2011A Estimate		2016 Projection		Percent Change	
		%		%		%		%	1990 to 2000	2011 to 2016
\$0 - \$15,000	8,878	12.6%	8,097	7.3%	11,582	5.6%	14,733	5.1%	-8.8%	27.2%
\$15,000 - \$24,999	7,964	11.3%	8,032	7.2%	11,358	5.5%	14,430	5.0%	0.9%	27.0%
\$25,000 - \$34,999	9,612	13.7%	10,302	9.3%	12,928	6.2%	15,614	5.4%	7.2%	20.8%
\$35,000 - \$49,999	15,194	21.6%	15,026	13.5%	21,547	10.4%	27,189	9.4%	-1.1%	26.2%
\$50,000 - \$74,999	16,946	24.1%	23,840	21.5%	34,384	16.5%	43,231	14.9%	40.7%	25.7%
\$75,000 - \$99,999	6,553	9.3%	17,376	15.7%	29,168	14.0%	38,739	13.4%	165.2%	32.8%
\$100,000 - \$149,999	3,553	5.0%	17,623	15.9%	44,062	21.2%	66,288	22.9%	396.0%	50.4%
\$150,000 +	1,729	2.5%	10,619	9.6%	42,906	20.6%	69,645	24.0%	514.2%	62.3%
Average Hhld Income	\$51,082		\$78,770		\$105,835		\$122,520		54.2%	15.8%
Median Hhld Income	\$42,806		\$64,029		\$83,978		\$94,380		49.6%	12.4%
Per Capita Income	\$16,037		\$24,649		\$35,944		\$47,064		53.7%	30.9%

\*This Census 2010 data has not yet been released

Current year data is for the year **2011**, 5 year projected data is for the year **2016**. More About Our Data.  
Demographic data ' 2011 by Experian/Applied Geographic Solutions.

Business List data ' 2011 by D&B<sup>fi</sup>. All rights reserved. All D&B information is powered by DUNSRight™, D&B's Quality Process.

**' 2011. DDR is brought to you by Alteryx, Inc.**

Alteryx, DemographicsNow.com and the Alteryx and DemographicsNow.com logos are trademarks of Alteryx, Inc. All rights reserved.

Privacy Statement | License Agreement